

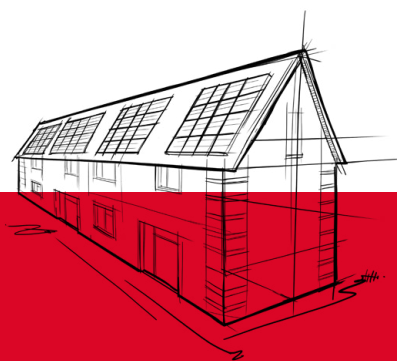
Steel Frame Slab

Non-combustible thermal insulation designed for use within steel frame constructions.

Steel Frame Slab is a semi-rigid insulation designed specifically for use between the studs in light gauge steel frame wall constructions.

Steel Frame Slab has been tested to BS EN 13501-1 achieving Euroclass reaction to fire rating A1. ROCKWOOL stone wool acts as a barrier to fire, withstanding temperatures over 1,000°C and, crucially, does not produce toxic smoke.

- Thermal performance – 0.034 W/mK.
- Non-combustible – Euroclass fire rating of A1, as defined in EN 13501-1.
- Stone wool is endlessly recyclable, meaning that it can be recycled again and again without any degradation.



ROCKWOOL Steel Frame Slab has been designed specifically for installation into standard size 600mm steel studs, making it a suitable solution for Modern Methods of Construction.

Steel Frame Slab



APPLICATIONS

Steel Frame Slab has been designed specifically for installation into standard size 600mm steel studs.

PERFORMANCE

Thermal performance

Steel Frame Slab achieves a thermal conductivity λ value of 0.034 W/mK in accordance with BS EN 13162:2012 + A1:2015.

Fire performance

Steel Frame Slab is non-combustible achieving a reaction to fire classification of A1, as defined in EN 13501-1.

Acoustic performance

The non-directional fibre orientation and density of stone wool means that sound waves are trapped and vibrations are dampened, which can help to reduce outside sources of noise when used in an external wall.

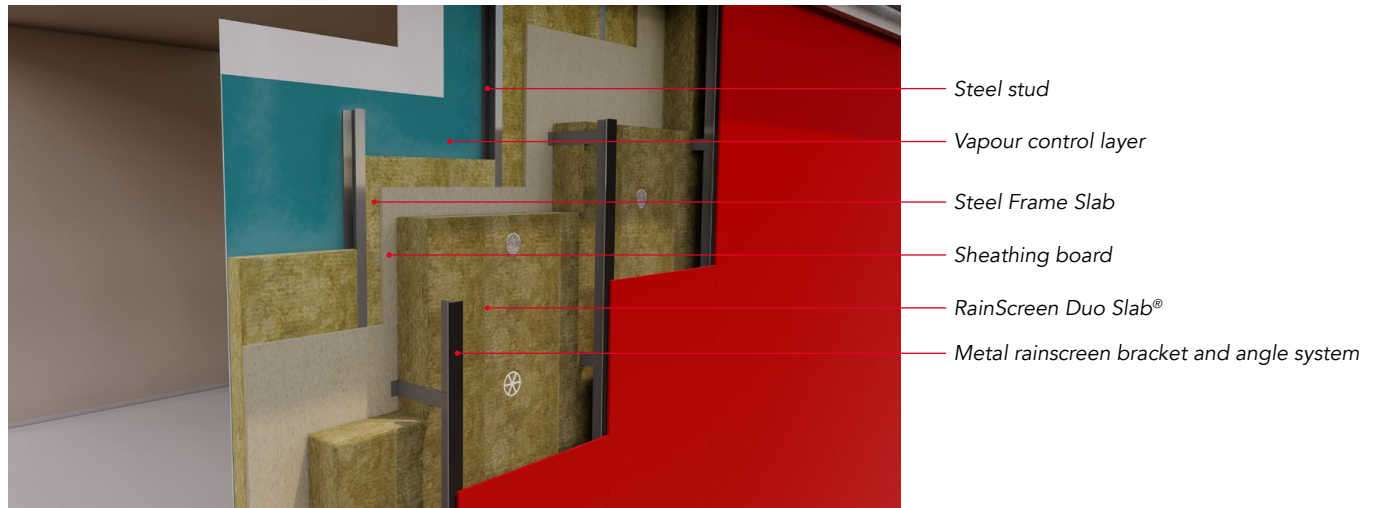
Steel Frame Slab

TYPICAL U-VALUES

Typical wall constructions and U-value are listed in the tables below:

External wall U-values – Example steel frame constructions

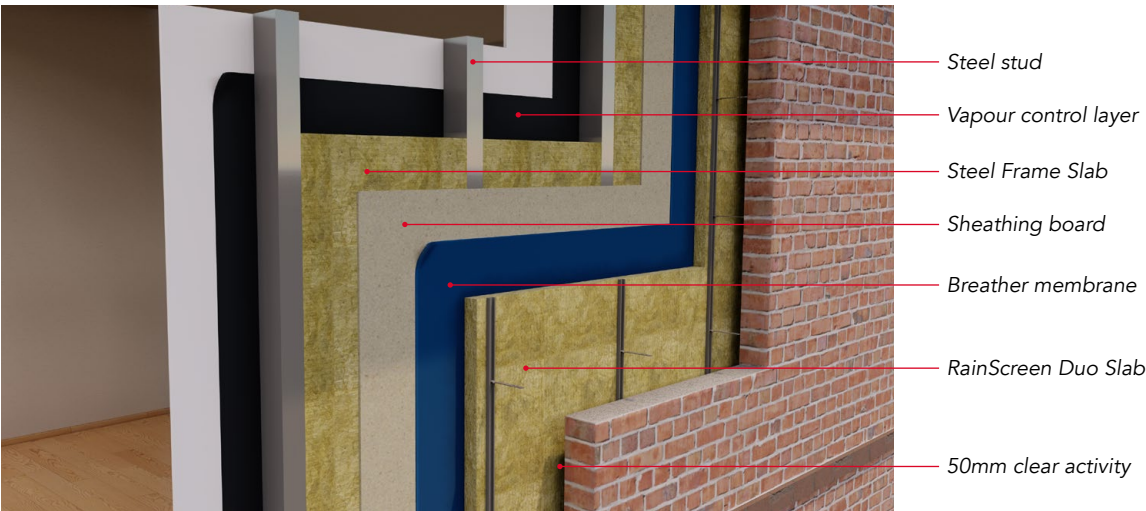
1. Steel framing system / In-fill walling with rainscreen façade



U-value (W/m ² K)	Stud depth (mm)	Steel Frame Slab (mm)	RainScreen Duo Slab
0.15	150	150	200
0.18	150	150	150
0.20	150	150	125
0.25	150	150	75
0.18	100	100	180
0.20	100	100	150
0.25	100	100	100

Steel Frame Slab

2. Steel frame system with brick outer



U-value (W/m²K)	Stud depth (mm)	Steel Frame Slab (mm)	RainScreen Duo Slab
0.27	100	100	50
0.24	150	150	50
0.19	100	100	100

Steel Frame Slab

PRODUCT INFORMATION

Length (mm)	Width (mm)	Thickness (mm)
1200	600	Available in a range of sizes between 50mm and 200mm*

*Thickness options may be subject to a minimum production volume. Speak to the specification team for guidance.

ADDITIONAL INFORMATION

Durability

Tests of our stone wool recovered from old buildings have shown that it retains its performance characteristics – thermal, mechanical, fire resistance – for at least 50 years, and probably longer. A test of a 65-year-old stone wool sample found in 2023 during a renovation of Copenhagen airport showed that these characteristics had not diminished after 65 years.**

**Testing done at Danish Technical Institute (DTI) in 2023, "Testing ROCKWOOL insulation from CPH airport hangar 4"

Water resistance and moisture

ROCKWOOL stone wool insulation is water repellent and non-hygroscopic, meaning it will not absorb water from the surrounding environment. It retains its thermal performance even in humid conditions, helping to support the durability of the building fabric.

Condensation

ROCKWOOL stone wool insulation is vapour permeable, reducing the risk of condensation, which can lead to rot, mould and humidity damage.

STANDARDS AND APPROVALS

Certificate
Steel Frame Slab satisfies the requirements of BS EN 13162 "Thermal insulation products for buildings. Factory made mineral wool (MW) products".
Manufactured under ISO 14001 Environmental Management Systems, and ISO 9001 Quality Management Systems.



INSTALLATION

Steel Frame Slabs are sized to friction fit into 600mm steel studs without the need to cut or create waste. Any cutting that is required can be done, even in awkward spacing, using an insulation knife.

The slabs are compressed and shrink wrapped in polyethylene film, supplied on pallets shrouded with a waterproof hood suitable for outside storage.

The product must be installed in accordance with the current ROCKWOOL guidelines. For further information please visit rockwool.com/uk or contact our Technical Solutions Team on 01656 868490.

Steel Frame Slab

BUILDING SAFETY AND PRODUCT USE

LEGAL NOTICES

General safety requirements – Building Safety Act 2022

ROCKWOOL Limited is committed to supporting specifiers, resellers and users of ROCKWOOL products for the full life cycle of the product to comply with the obligations and responsibilities set out in the Building Safety Act 2022. With regard to the general safety requirements of the Act, ROCKWOOL Limited cannot control or foresee every situation where its products might be used. We therefore strongly advise that specifiers, resellers and users contact us where use of ROCKWOOL products is contemplated in applications different from those explicitly described in the latest, relevant ROCKWOOL product datasheets; especially in applications that can be reasonably foreseen as critical to safety.

ROCKWOOL Limited reserves the right to amend the specification of its products without notice. Changes to the ROCKWOOL manufacturing process, or to pertinent regulations, may be reflected in changes to tested and certified product performance. Whilst ROCKWOOL Limited endeavours to keep its publications up to date, readers will appreciate that between publications there may be pertinent changes in the law or other developments affecting the accuracy of the information contained in our publications.

ROCKWOOL Limited does not accept responsibility for the consequences of using (including testing or certifying) its products in applications different from those explicitly described in the relevant ROCKWOOL product datasheets. Expert advice should be sought, and ROCKWOOL Limited should be contacted, where such different use is contemplated, or where the extent of any use described by ROCKWOOL Limited is in doubt.

The ROCKWOOL Trademark

ROCKWOOL® - our trademark

The ROCKWOOL trademark was initially registered in Denmark as a logo mark back in 1936. In 1937, it was accompanied with a word mark registration; a registration which is now extended to more than 60 countries around the world.

The ROCKWOOL trademark is one of the most important assets of the ROCKWOOL Group, and is therefore well-protected and defended by ROCKWOOL throughout the world.

If you require permission to use the ROCKWOOL logo for your business, advertising or promotion, you must apply for a Trade Mark Usage Agreement.

To apply, write to:
marketcom@rockwool.com

Trademarks

Registered trademarks of the ROCKWOOL Group include but are not limited to:

ROCKWOOL®, RockClose®, RainScreen Duo Slab®, HardRock®, RockFloor®, Flexi®, RockFall®, FirePro®, DuctRock®, BeamClad®, NyRock®

© ROCKWOOL 2025.
All rights reserved.

Health and safety

A Material Safety Data Sheet is available and can be downloaded from rockwool.com/uk to assist in the preparation of risk assessments, as required by the Control of Substances Hazardous to Health Regulations (COSHH).

Photography and illustrations

The product illustrations are the property of ROCKWOOL Limited and have been created for indicative purposes only.

Unless indicated below, the photography and illustrations used in this guide are the property of ROCKWOOL Limited. We reserve all rights to the usage of these images.

If you require permission to use ROCKWOOL images, you must apply for a Usage Agreement.

To apply, write to:
marketcom@rockwool.com

Steel Frame Slab

Company:	ROCKWOOL Limited
Version:	Version 1.03 October 2025 (to check this is the latest version, please refer to rockwool.com/uk)
Revised on:	22.10.2025
Product name:	Steel Frame Slab
Replaces version:	Version 1.02 August 2025
Changes made:	N/A
Additional information:	N/A

Please ensure you are using the latest version of this document by verifying it on our official website. Do not rely on printed or previously downloaded copies, as these may be out of date.

Please contact the ROCKWOOL Technical Support Team if you would like to access archived versions of this document.

Steel Frame Slab

ROCKWOOL stone wool – safe to install and live alongside

There are no hazardous classifications associated with stone wool insulation manufactured by ROCKWOOL UK according to EU REACH and UK REACH regulations on health and the environment.

ROCKWOOL safe use instruction sheets and material safety data sheets (where applicable) can be downloaded [here](#).



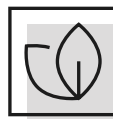
Sustainability

ROCKWOOL products are used to help enrich modern living, supporting more resilient and comfortable buildings.

We transform abundant, natural volcanic rock into stone wool insulation products that help our customers tackle energy consumption, noise pollution, fire resilience, and climate change challenges such as water scarcity and flooding.

Since our stone wool is endlessly recyclable with no loss in its performance properties, we can take back clean, uncontaminated new off-cuts and unused ROCKWOOL stone wool insulation from construction sites in the UK. Our service, Rockcycle®, takes back our stone wool and recycles it back into production where it is used to make new ROCKWOOL products.

Our annual sustainability reports, which set out progress against our sustainability goals, and further details of the positive impacts of using our products can be found on our website.



Environment

ROCKWOOL takes a fact-based, auditable approach to documenting our progress in maximising our products' positive impact and minimising the effect our operations have on the environment, backed by third-party references and methodologies. Further details can be found online in our annual sustainability report.

Our high-tech production process uses filters, pre-heaters, after-burners and other cleaning and collection systems that help to reduce the effects of our manufacturing operations on the environment.

ROCKWOOL stone wool insulation does not contain (and has never contained) gases that have ozone depletion potential (ODP) or global warming potential (GWP).

